



Ventura County Freight Corridors Study

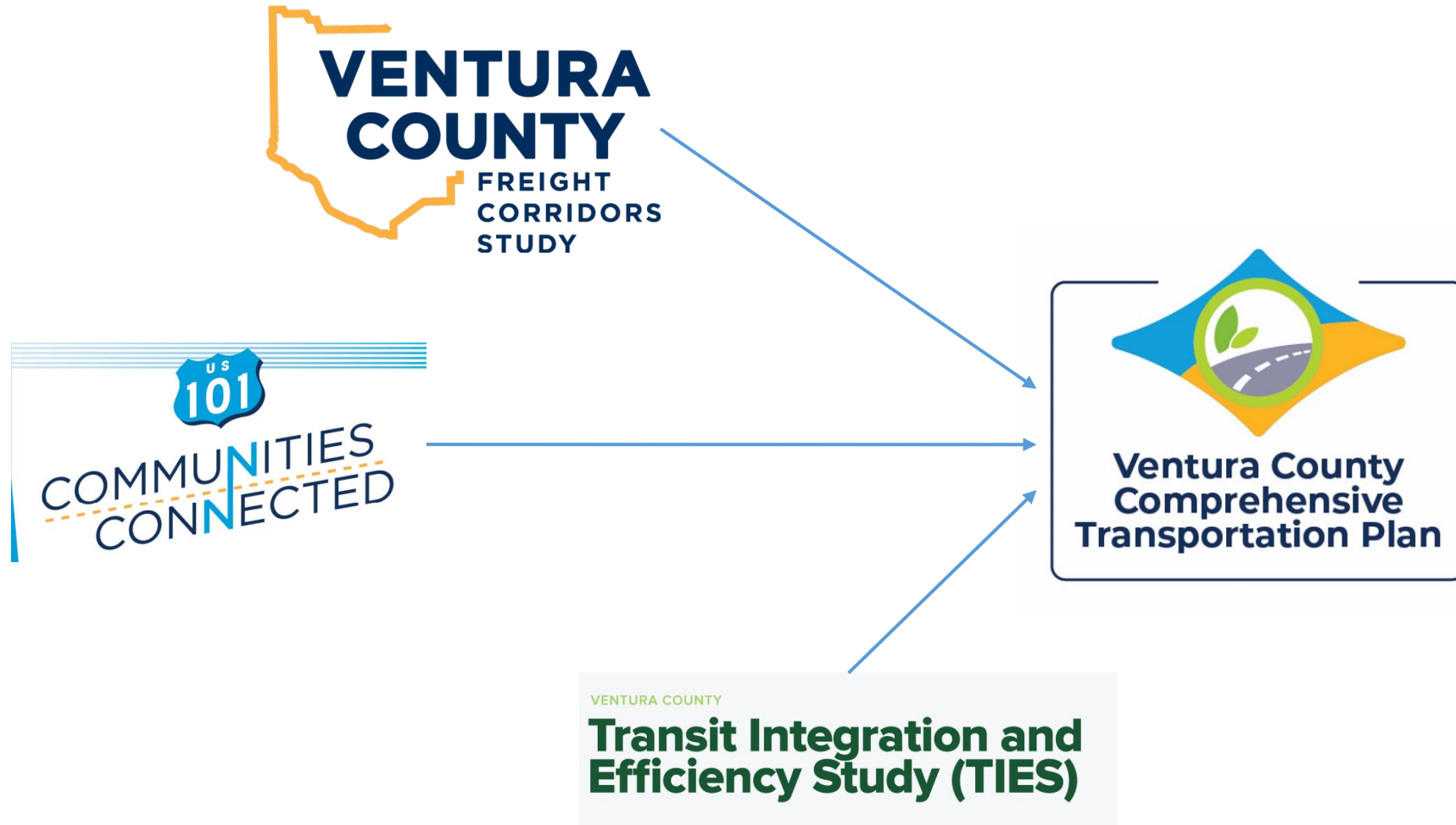


**Comprehensive Draft Study Presentation to
Ventura County Transportation Commission
October 1, 2021**



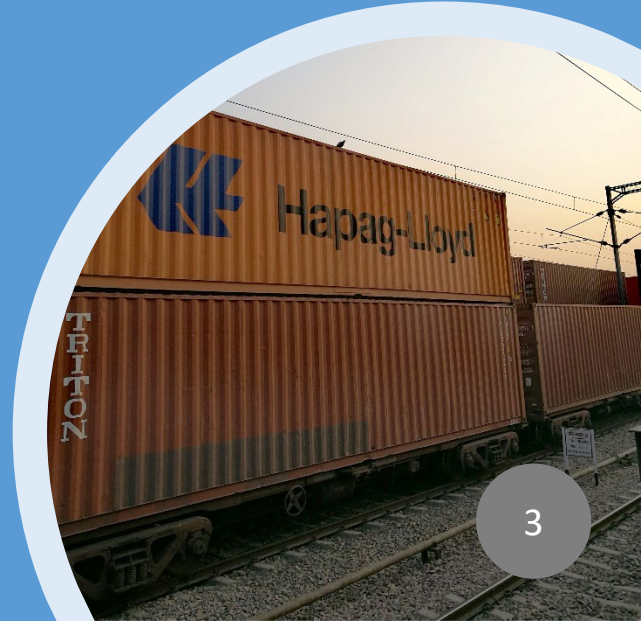


Planning Context



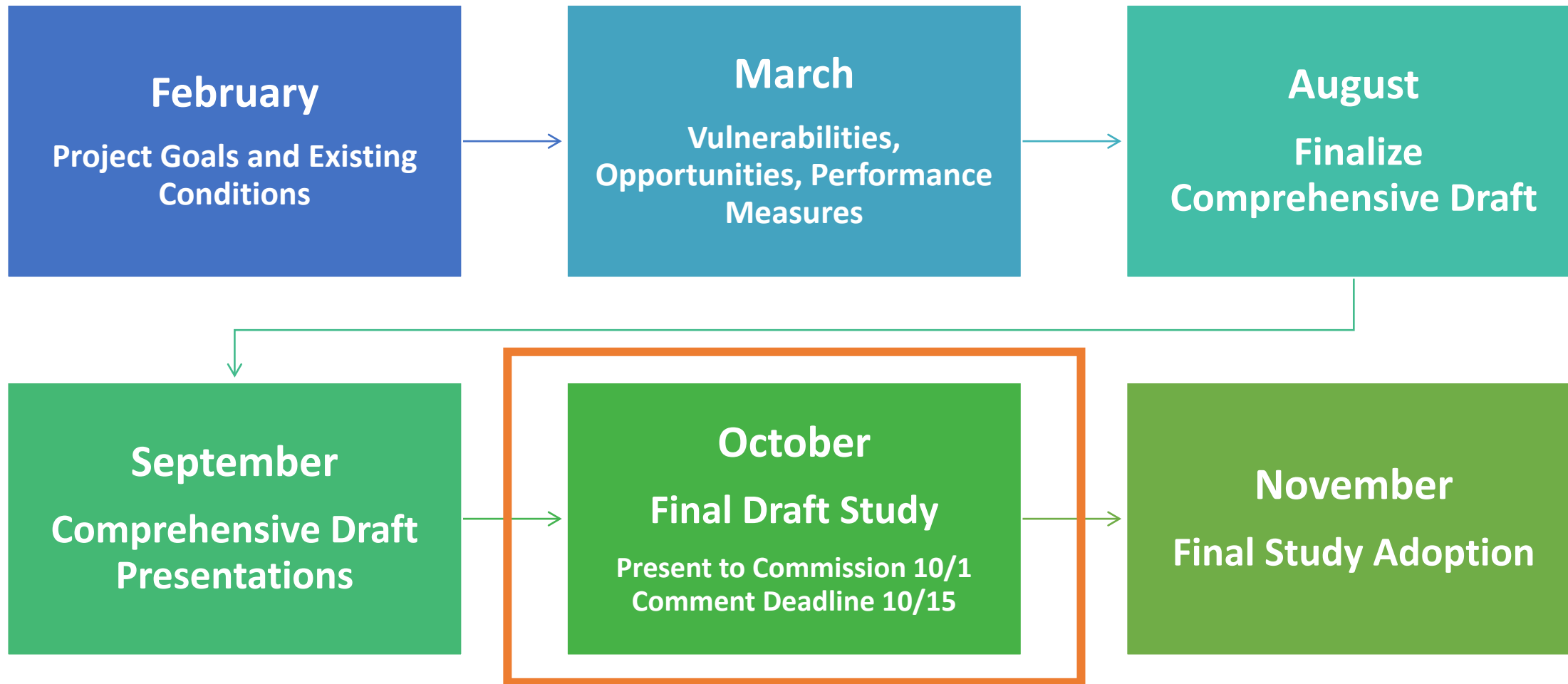


What is The Freight Corridors Study?





Schedule (2021)



Freight Corridors Study Goals

Goal 1 - Multimodal Mobility

Goal 2 - Economic Prosperity

Goal 3 - Environmental Stewardship

Goal 4 - Healthy Communities

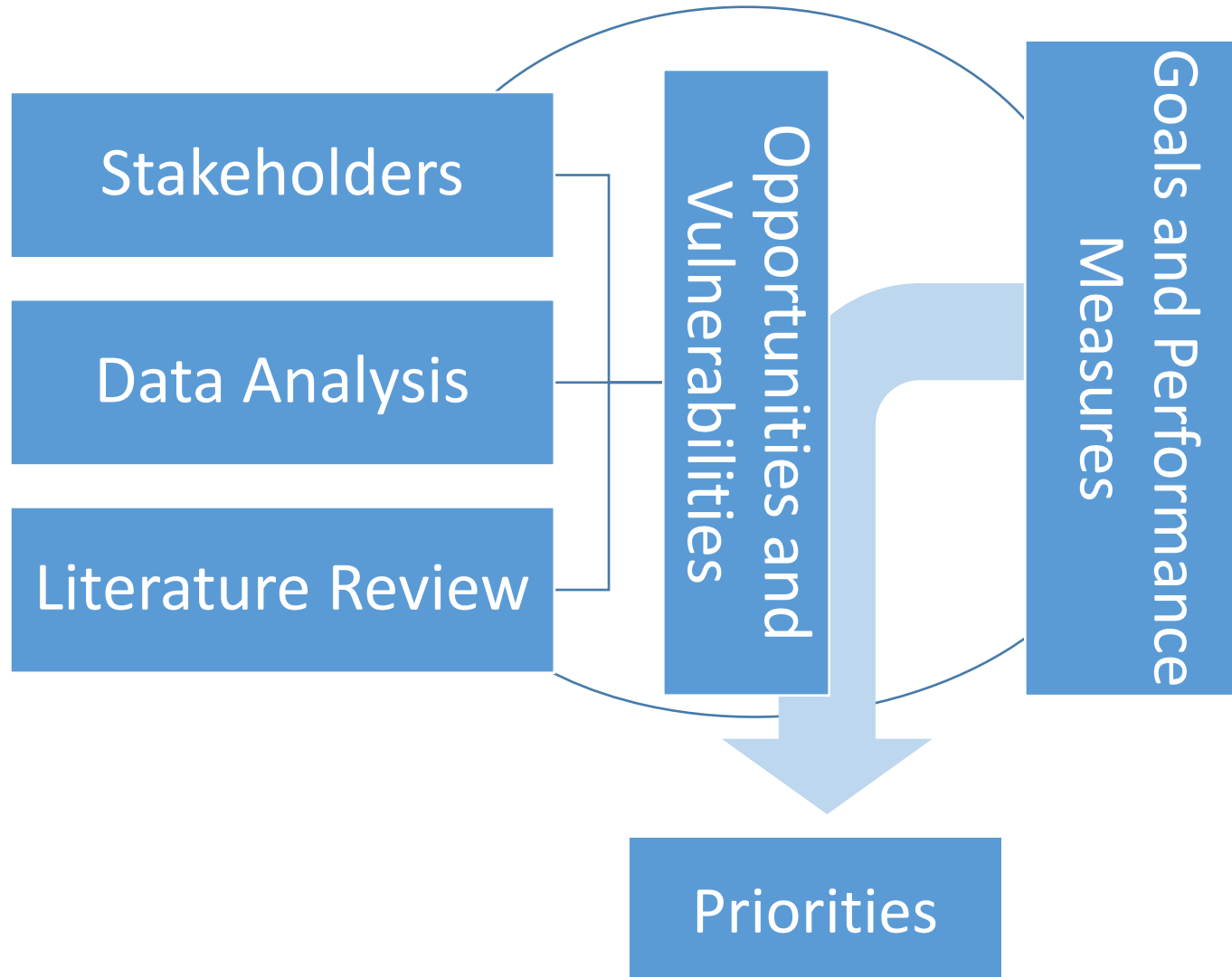
Goal 5 - Safety and Resiliency

Goal 6 - Asset Management

Goal 7 - Connectivity and Accessibility



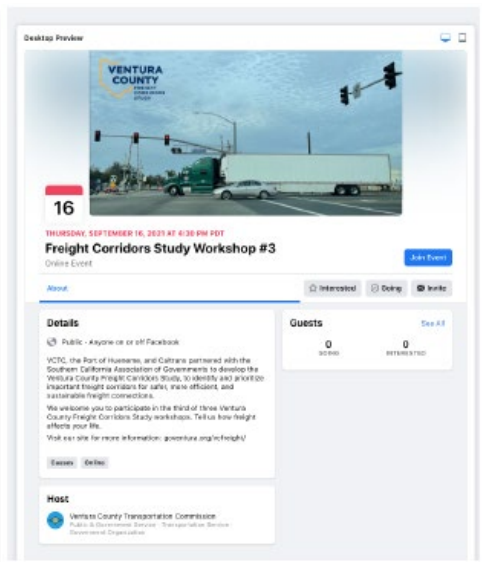
Freight Corridors Study Process





Stakeholder & Community Engagement

- ~30 Stakeholder Interviews
- 3 Public Workshops (Live & Recorded, English & Spanish)
- Email & phone communications
- Presentations to Somis and El Rio & Nyeland Acres MACs
- Presentations to TTAC and VCCPDA
- Bilingual Social Media campaign reached over 15,000 Ventura County residents
- Project Website & Online Survey goventura.org/vcfreight

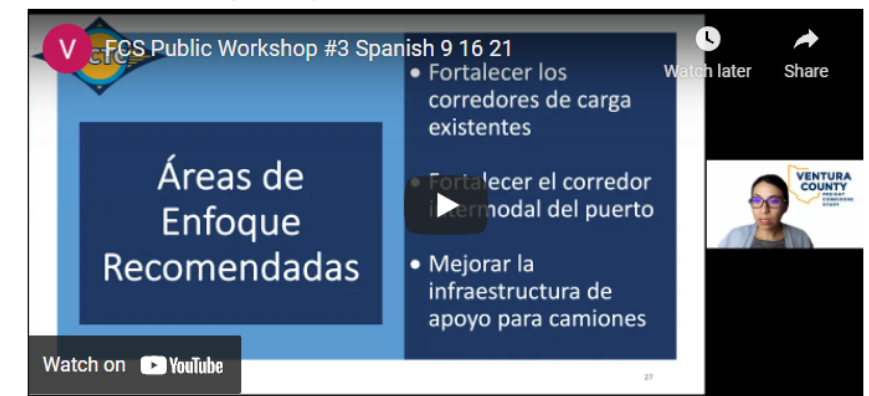


Public Workshop #3 (English)



Public Workshop #3 Slides [are available here \(English\)](#)

Public Workshop #3 (Spanish)



Public Workshop #3 Slides [are available here \(Spanish\)](#)



Problem
Identification



Balancing the
role of freight with
community
priorities



Assessing
potential
solutions

Principles for Freight Corridors in Ventura County

- **Sustained involvement** in the development of transportation infrastructure investments to ensure capital improvements are **both** freight corridor and community assets.
- **Commitment to safety** and to encourage the transition to a fleet of **zero emission vehicles** by facilitating charging and other supportive infrastructure.
- **Avoid impacts on communities**, especially disadvantaged communities.

Draft Freight Corridors Study

← → ↻ goventura.org/vcfreight/#tab-1576618435266-3-2 ☆

VCTC HOME ABOUT ▾ MEETINGS **GETTING AROUND** ▾ VCTC TRANSIT ▾ WORK WITH VCTC ▾ CONTACT

VENTURA COUNTY

FREIGHT CORRIDORS STUDY

OVERVIEW PUBLIC INPUT RELATED PROJECTS RESOURCES

Download the Draft Ventura County Freight Corridors Study Here:

VENTURA COUNTY FREIGHT CORRIDORS STUDY - SEPTEMBER 2021 DRAFT



Key Findings

- Opportunities and Vulnerabilities
- Truck Trip Generation
- Truck Travel Patterns
- Rail Safety Beyond Crossings



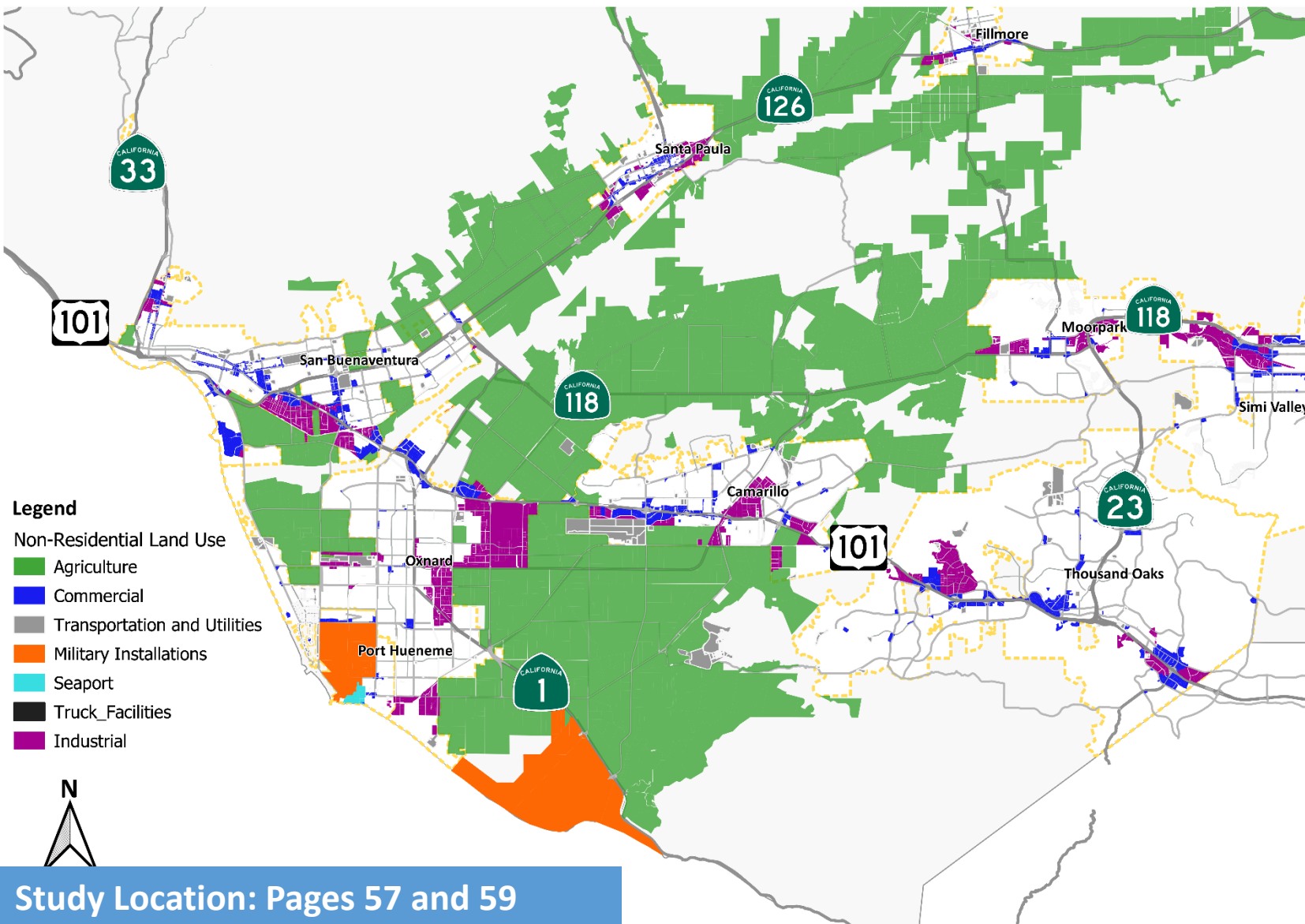
Opportunities and Vulnerabilities

- Port and Naval Base Access
- Truck Patterns
- Truck Parking
- Enforcement and Administration
- Highway/Rail Grade Crossings
- Rail Corridors
- Multimodal Transportation
- Environmental Impacts
- Land Use
- Inadequate Infrastructure and Areas in Need of Improvement





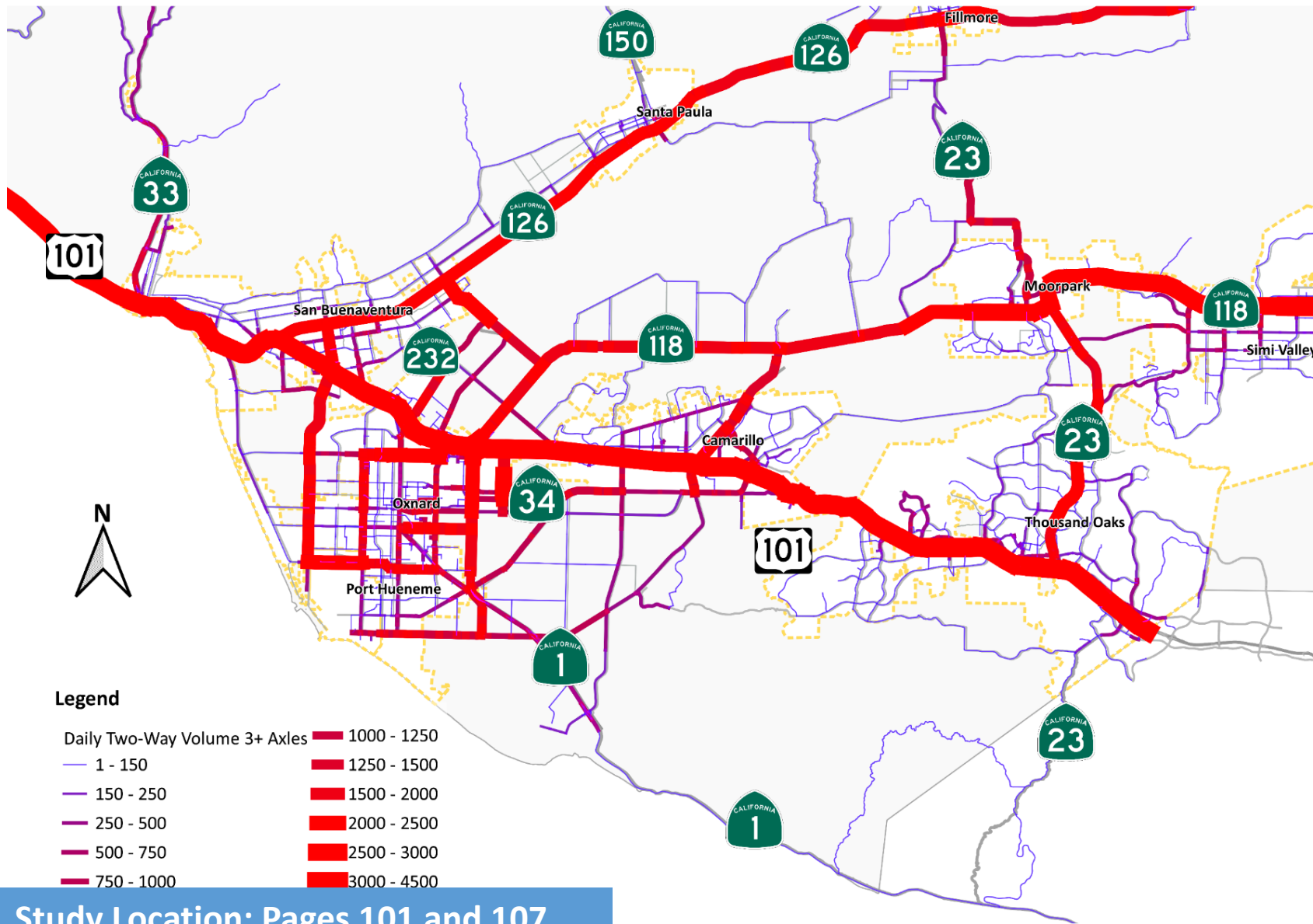
Land Use and Truck Generation



Location	Truck Trip Generation	Percent of Total
Camarillo	4,300	8%
Fillmore	600	1%
Moorpark	2,000	4%
Ojai	200	0%
Oxnard	13,300	23%
Port Hueneme	1,600	3%
San Buenaventura	6,700	12%
Santa Paula	1,300	2%
Simi Valley	5,800	10%
Thousand Oaks	9,500	17%
Unincorporated Total	11,300	20%
Camarillo Area	2,200	4%
Fillmore Area	100	0%
Las Posas Area	500	1%
Moorpark Area	400	1%
Oak Park Area	400	1%
Ojai Area	800	1%
Oxnard Area	3,600	6%
Piru Area	100	0%
Santa Paula Area	700	1%
Simi Valley Area	800	1%
Ventura Area	1,600	3%
North County	100	0%
Total	56,600	100%



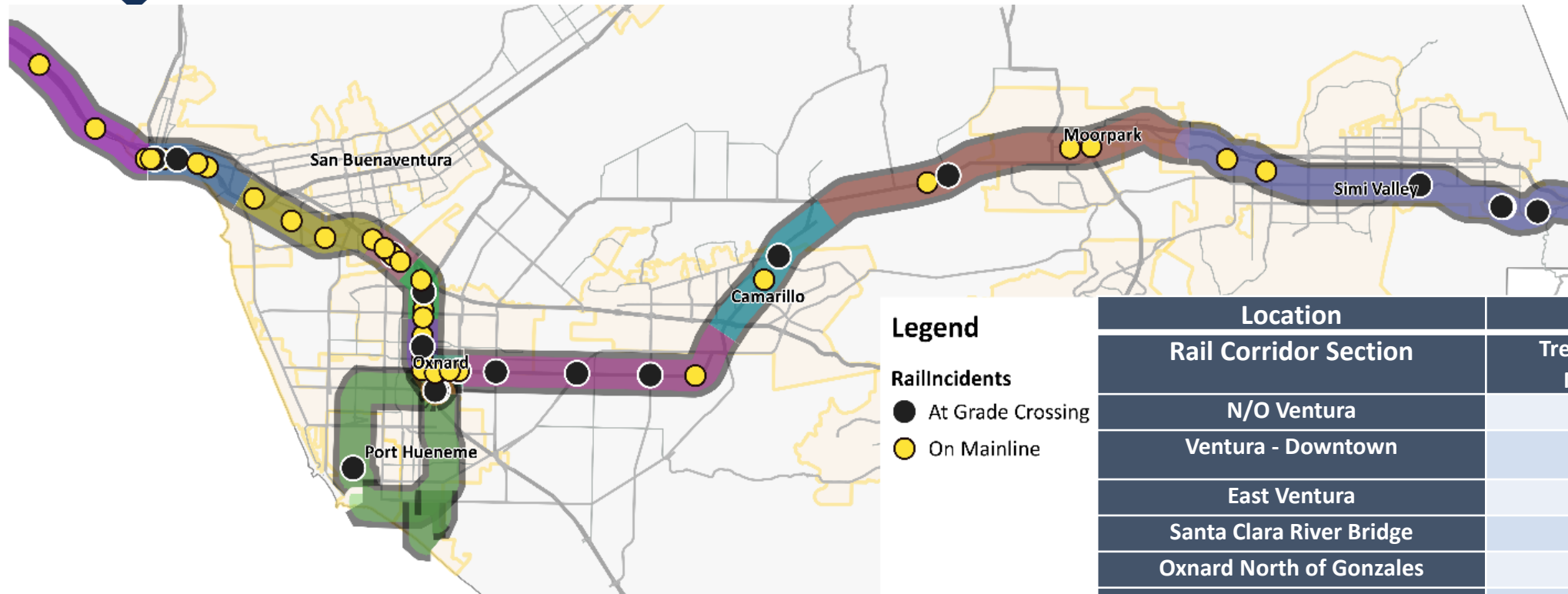
Daily Truck Volumes



Highway	Location	Daily Truck Volume
State Route 1	Calleguas Creek	250
State Route 23	At State Route 118	1,350
State Route 33	At State Route 150	150
State Route 34	At Rice Avenue	500
State Route 34	At State Route 118	1,250
US 101	At State Route 23	4,000
US 101	At State Route 232	3,400
US 101	At State Route 33	3,300
State Route 118	At Spring Street	3,100
State Route 118	At State Route 34	2,275
State Route 118	At State Route 232	2,800
State Route 118	At Tapo Road	2,800
State Route 126	In Piru	1,950
State Route 126	At State Route 118	1,950
State Route 150	At State Route 33	375
State Route 232	At US 101	1,150



Rail Incidents with Non-Rail Users



Legend

RailIncidents

- At Grade Crossing
- On Mainline

Location Rail Corridor Section	Incidents		
	Trespasser on Mainline	Hwy / Rail	Total
N/O Ventura	3	0	3
Ventura - Downtown	7	3	10
East Ventura	4	0	4
Santa Clara River Bridge	5	1	6
Oxnard North of Gonzales	4	1	5
Oxnard - Downtown	5	1	6
VCRR	0	1	1
VCRR - Five Points	0	2	2
Oxnard - Industrial Area on 5th	5	1	6
State Route 34 - 5th Street	1	9	10
State Route 34 - Lewis Road	1	1	2
State Route 118 - Los Angeles Avenue	6	0	6
Simi Valley	3	4	7
Total	44	24	68

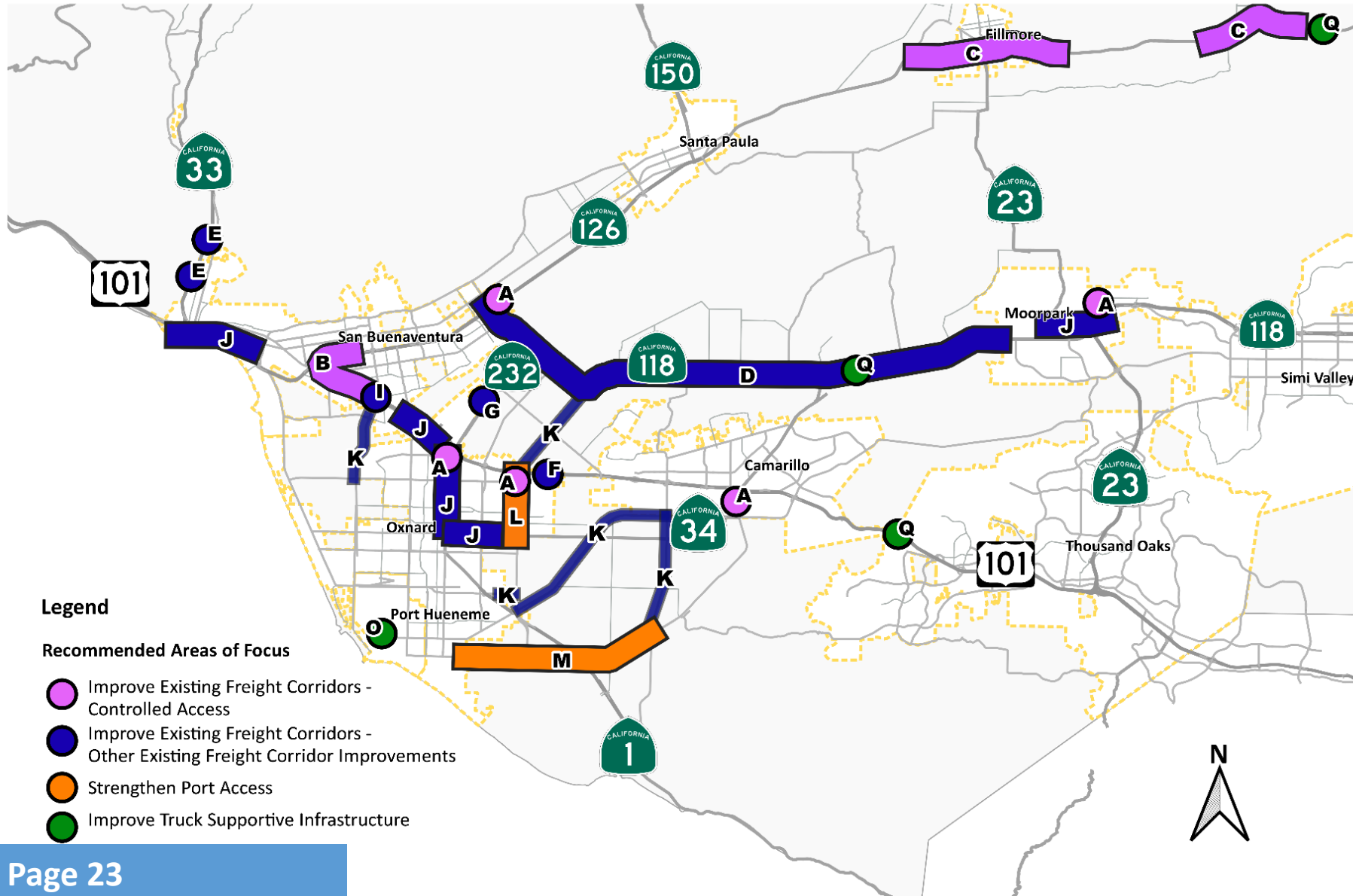


Recommended Areas of Focus

- Strengthen Existing Freight Corridors
- Strengthen the Port Intermodal Corridor
- Improve Truck Supportive Infrastructure



Recommended Areas of Focus





Recommended Areas of Focus

Improve Existing Freight Corridors – Freeways

A. Enhanced Truck Route Identification

B. State Route 126 Westbound to US 101
Southbound Connector

C. State Route 126 Improvements in
Fillmore and Piru



TRAVEL TIME TO:

Rice Ave		via		and		25 MIN
	via		and			30 MIN



Recommended Areas of Focus

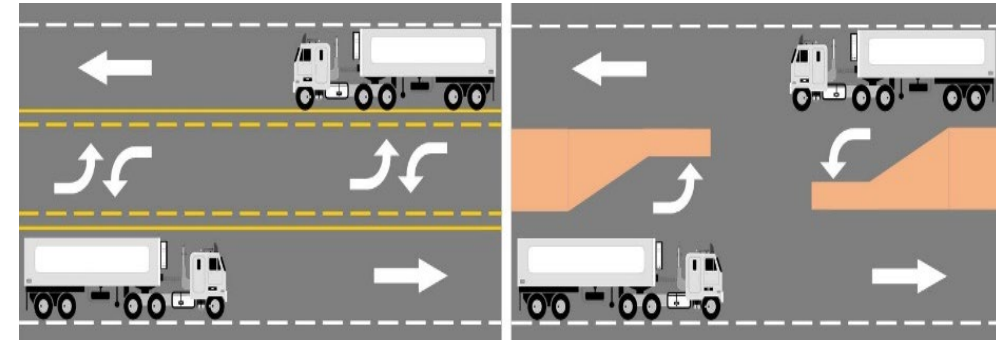
Improve Existing Freight Corridors – Not on Freeways Mainlines

D. State Route 118 Corridor Safety Project

E. State Route 33 Stanley Avenue / Shell Road Improvements

F. US 101 / Del Norte Boulevard Interchange Improvements

G. State Route 232 (Vineyard Avenue) pedestrian crossing





Recommended Areas of Focus

Improve Existing Freight Corridors – Not on Freeways (cont.)

H. Community Traffic Calming Program

I. US 101 at Victoria Avenue Interchange Improvements

J. Rail Corridor Fencing / Pedestrian Rail Crossings

K. Integrate Freight Considerations in Corridor Feasibility Studies



Recommended Areas of Focus

Strengthen Port Access

L. Rice Avenue Designation as State Route 1

M. Hueneme Road Access

N. Ventura County Railroad Emission Reduction

O. Port of Hueneme Environmental Framework Implementation





Recommended Areas of Focus

Improve Truck Supportive Infrastructure

P. Public Truck Parking

Q. Commercial Vehicle Enforcement Facility Upgrades

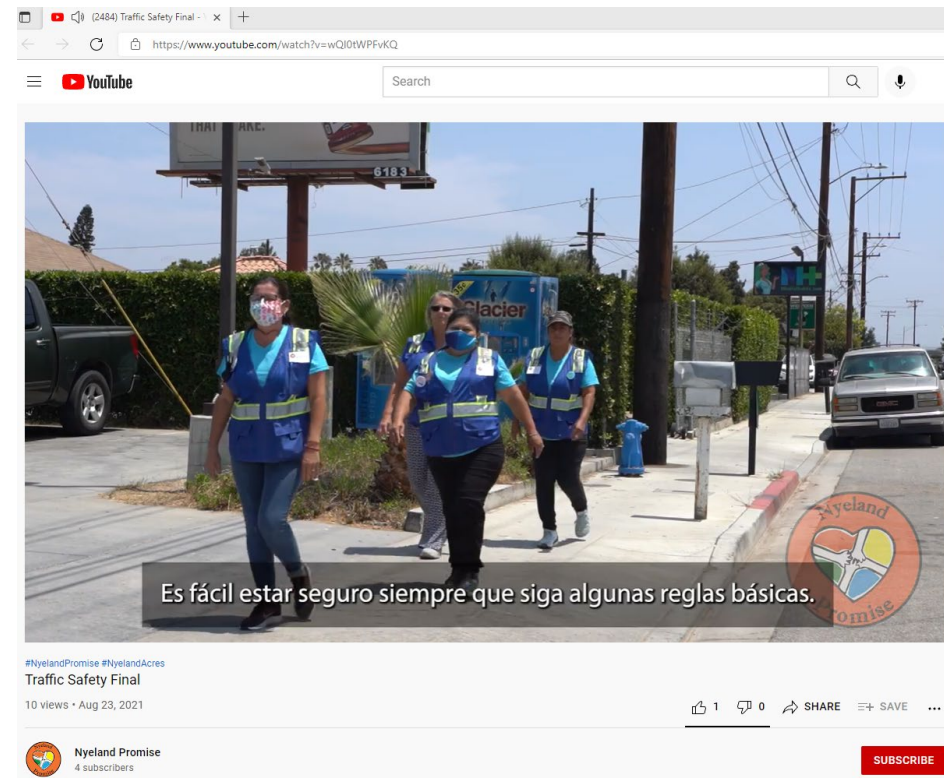
R. Transition to Zero Emissions Vehicles





Implementation

- Inform future VCTC studies or programs, such as community speed enforcement and signage improvements
- Incorporate recommended strategies into the CTP Update
- Provide regional context for Sponsoring Agency decision making
- Inform VCTC and partner agency work plans and projects selection



<https://youtu.be/wQI0tWPFvKQ>



Next Steps



October 1- Presentation at the VCTC Board Meeting (Public Meeting)



October 15 - Deadline to Submit Comments



November 5 - Consideration of Approval by VCTC Board (Public Meeting)



Questions?

goventura.org/vcfreight

Contact us:

vcfreightstudy@goventura.org



VENTURA COUNTY

**FREIGHT
CORRIDORS
STUDY**

Amanda Fagan, Director of Planning and Sustainability

Ventura County Transportation Commission

afagan@goventura.org

805-642-1591 x103